

Modern Roaming for Notes and Nomad

Cheaper Faster Better Stronger

April 11th, 2024



Host & Speaker



Femke Goedhart 

Product Marketing Manager
& Business Consultant

femke.goedhart@panagenda.com



Christoph Adler 

Head of Solution Consulting

christoph.adler@panagenda.com



All attendee lines are muted

This is to prevent interruptions during the presentation.



Please submit questions via the Chat or Q&A panel

Your questions will be addressed directly during the webinar or in the Q&A section after the presentation.



The webinar is being recorded

After the webinar, we will send you a mail to give access to the recording and presentation slides.

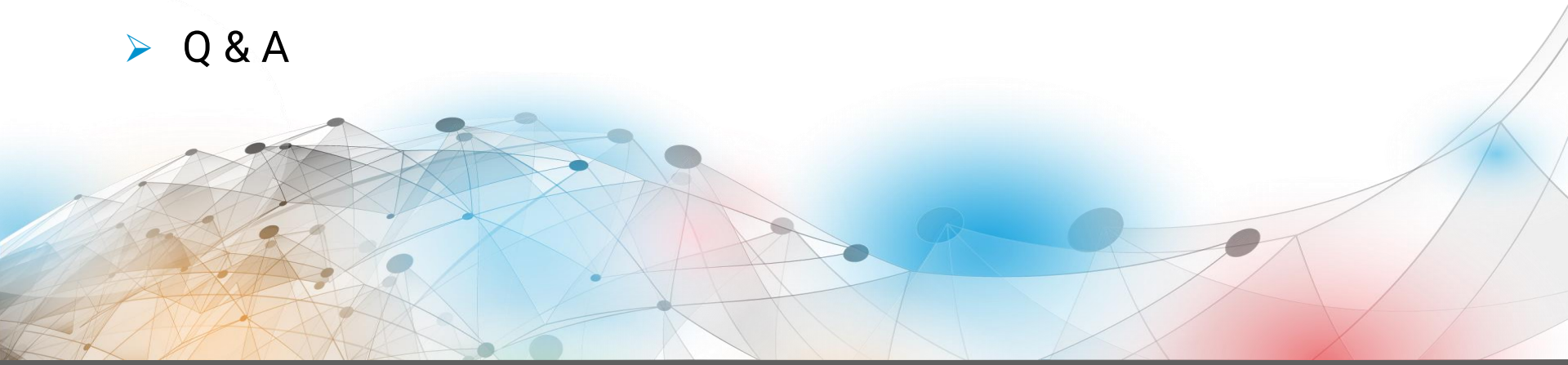


Share your feedback with us

Use the link provided at the end to let us know what we can do better.

Agenda

- Why you should **NOT** use Notes Roaming User
- What you should expect from a modern Roaming solution
- Live Demo – HCL Notes
- Demo – HCL Nomad Web & Mobile
- Bonus – From Notes to Nomad
- Q & A





Why you should **NOT** use Notes
Roaming User

Why you should **NOT** use Notes Roaming User

- Designed for Notes Basic Clients (Notes 6.0.1)
- Does only contain a subset of the user settings
 - Notes.ini
 - Eclipse Preferences
- Footprint of the “roaming set” starts with
 - New user with no data = 20 MB
 - Existing user with data = easily 100 MB and more
- High(er) network load compared to other solutions
- Roaming start takes (a lot of) time
- Not suitable for non-persistent virtual environments (Citrix, VMWare, etc.)
- Easy to enable (get in) and (very) hard to get out
- Does not support Nomad Web and Mobile



**What you should expect from a
modern Roaming solution**

What you should expect from a modern Roaming solution



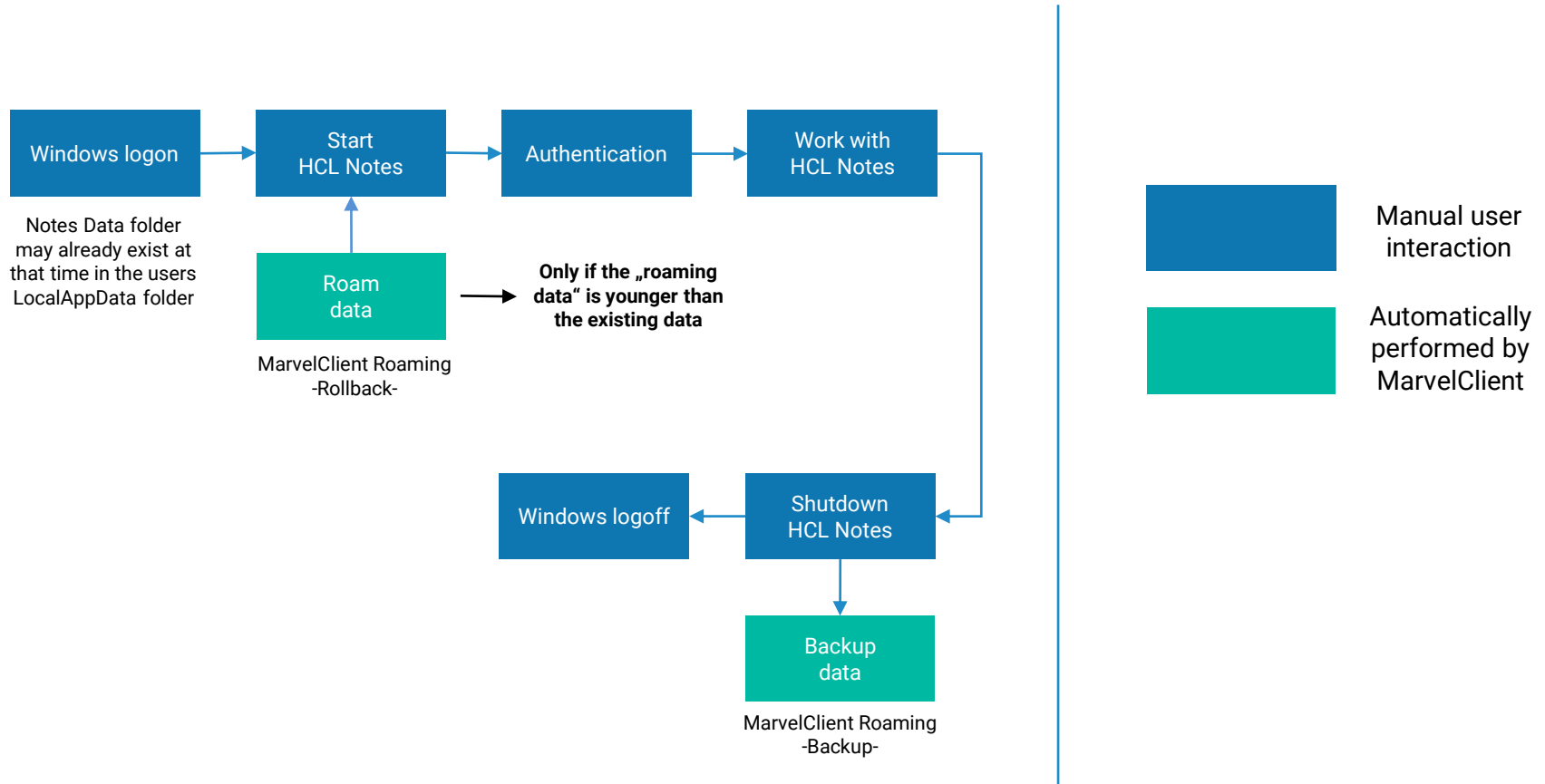
- Supports all client types
 - Notes Basic & Standard (Windows & MacOS)
 - Nomad Web (Chrome, Edge & Firefox)
 - Nomad Mobile (Android & iOS)
- Roams **ALL** needed user data
- Small footprint for “roaming sets”
 - < 2 MB (Notes)
 - < 200 kB (Nomad)
- Very low network load → works perfectly with remote workers
- Supports all virtual environments
 - Persistent AND non-persistent
 - WTS, Citrix, VMWare, etc.



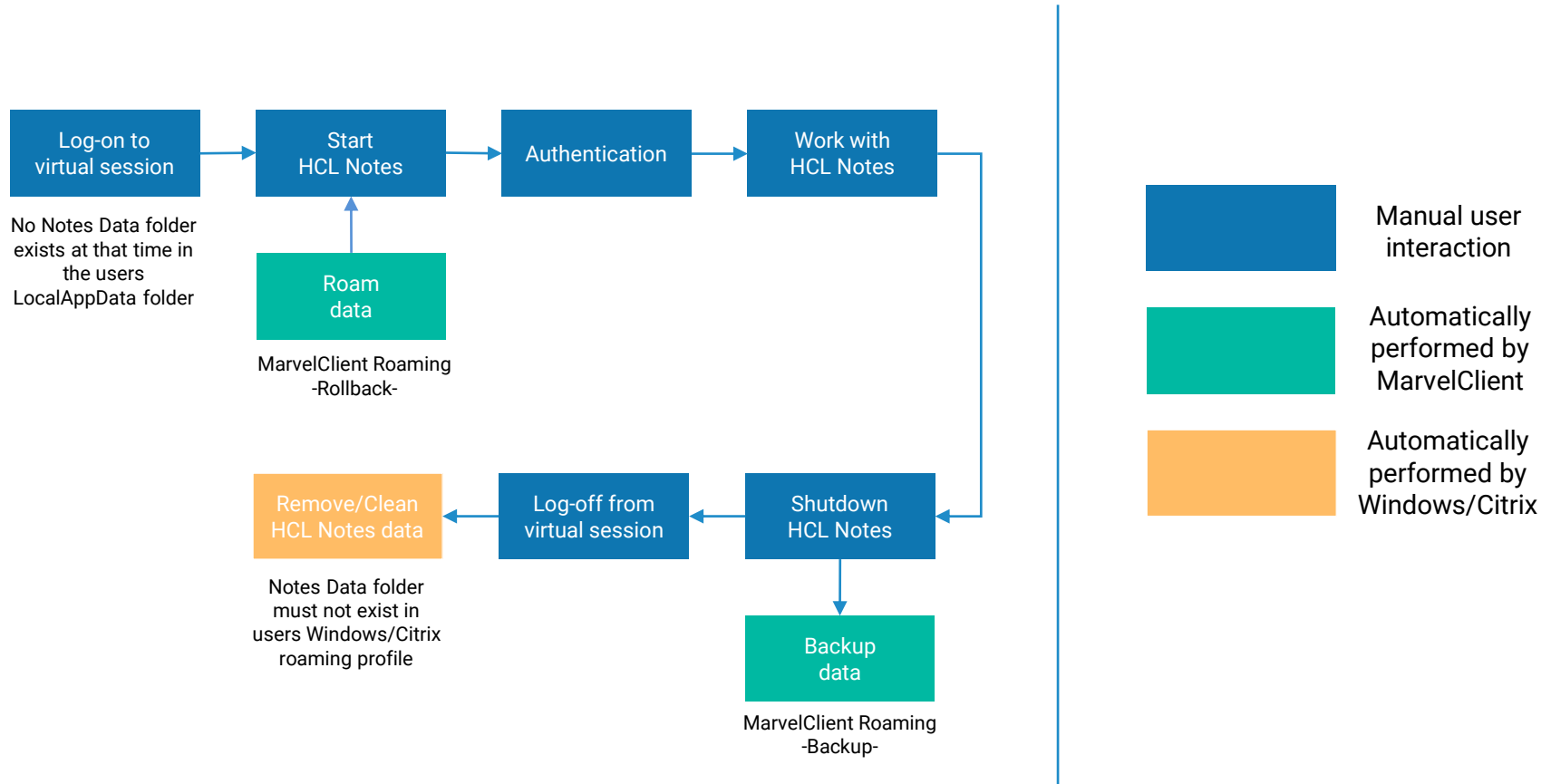
MarvelClient™ Roaming



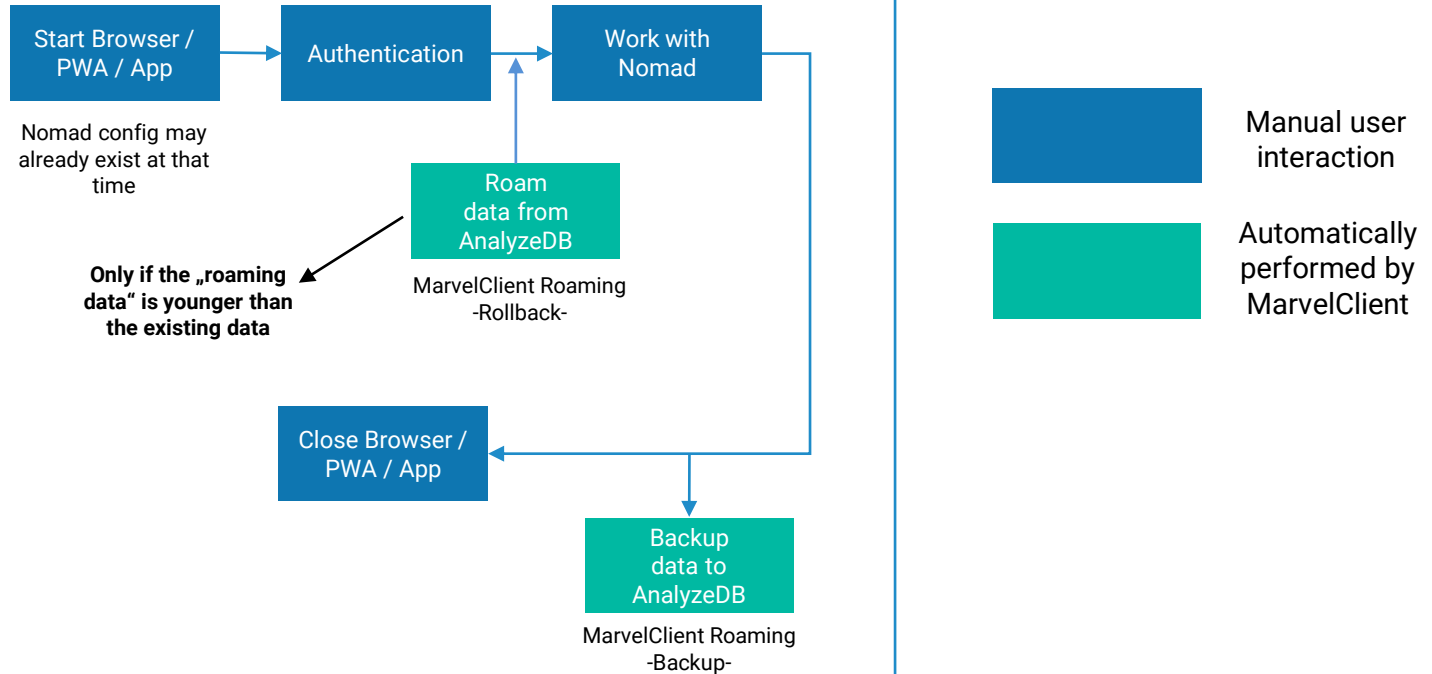
MarvelClient Roaming architecture for Laptops/Desktops



MarvelClient Roaming architecture for Citrix/VDI



MarvelClient Roaming architecture for Nomad





Live Demo

MarvelClient Roaming with Notes



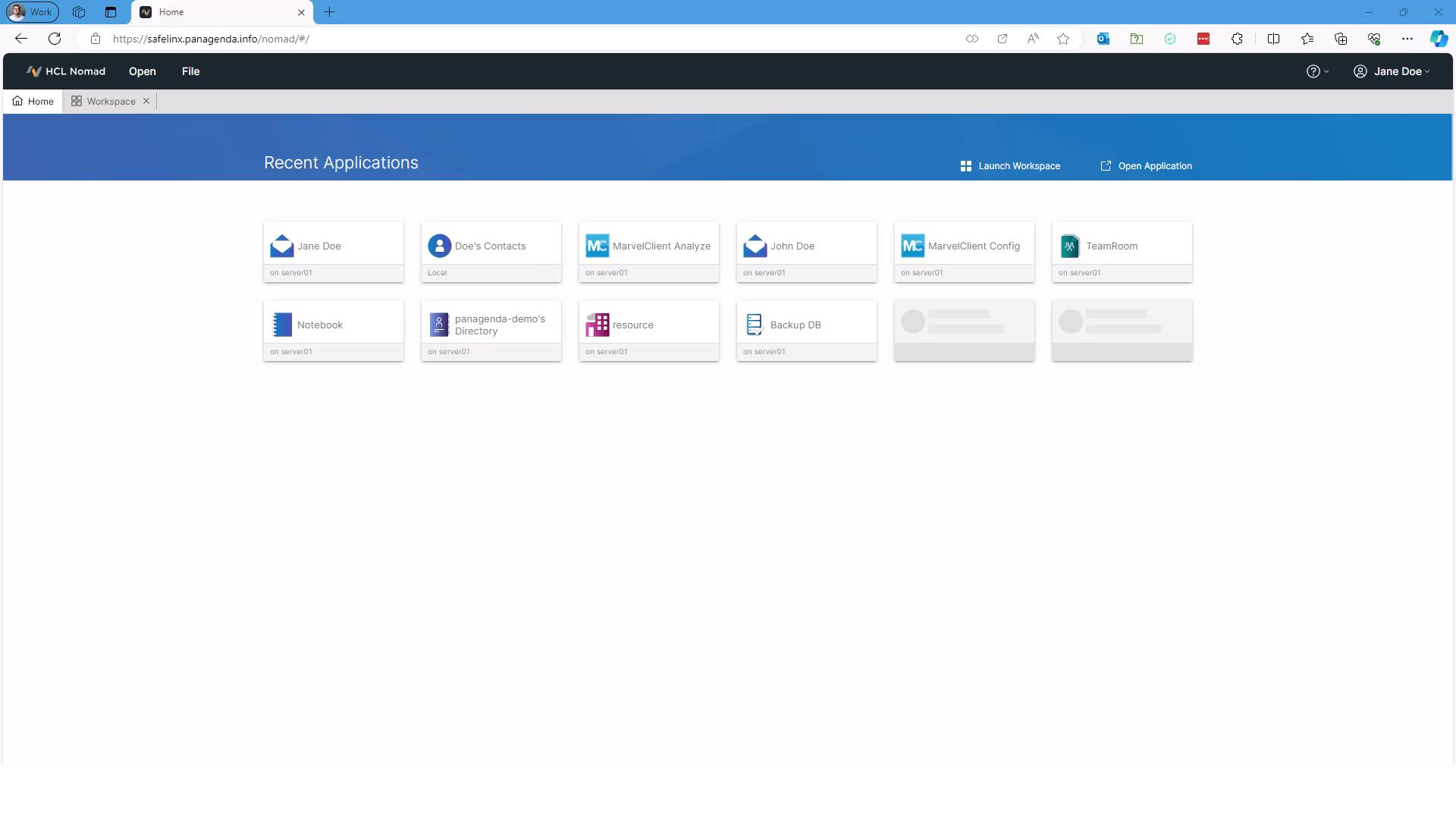
Upgrade Your Time



(Live) Demo
MarvelClient Roaming with Nomad



Upgrade Your Time



Recent Applications

Launch Workspace

Open Application

Jane Doe
on server01

Doe's Contacts
Local

MarvelClient Analyze
on server01

John Doe
on server01

MarvelClient Config
on server01

TeamRoom
on server01

Notebook
on server01

panagenda-demo's Directory
on server01

resource
on server01

Backup DB
on server01

[Placeholder]

[Placeholder]

Proxy Setup

[Next](#)**Domino Client Setup**

Press 'Proxy Setup' to configure using a Nomad proxy server or enter the following information to configure using your Domino Server and then press 'Next'.

Your name

For example: Mary Smith

Domino server name

For example: Maple/HCL

Server address

For example: maple.hcl.com

[Privacy Policy](#)

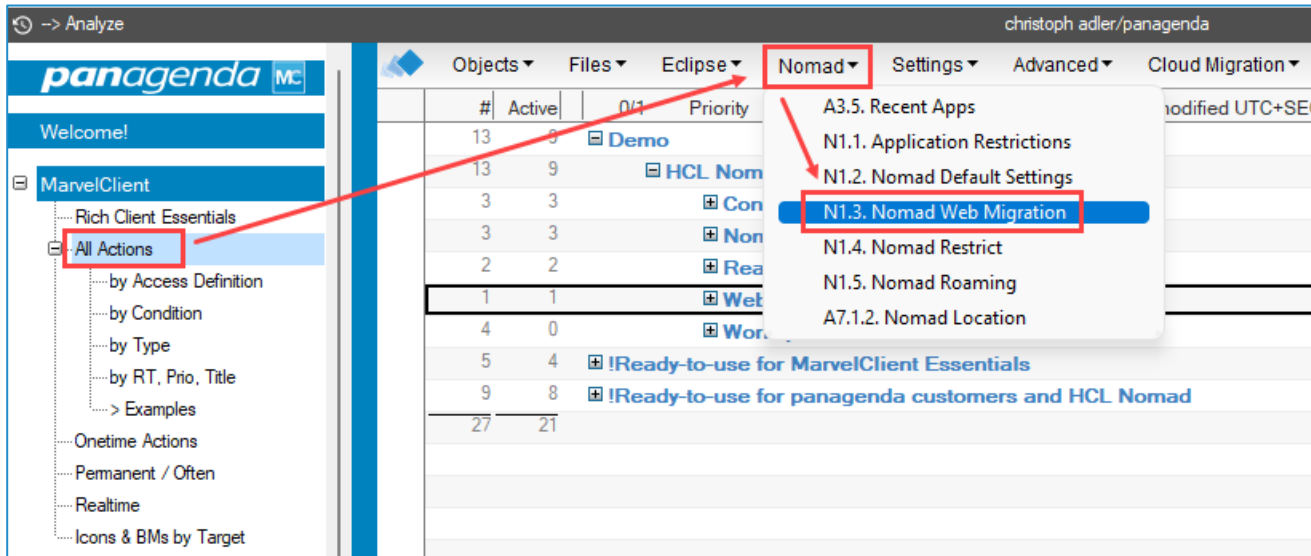
Bonus – From Notes to Nomad



- This functionality is included in CCB
(free for all customers with active HCL maintenance)
- **Requirement**
Every user **must** have a user profile / upload document in the MarvelClient Analyze database (including bookmark.xml, desktop.xml and notes.ini) and **must not** be a Notes Roaming User 😊

Nomad Web Migration – from Notes to Nomad (cont.)

- A single and simple MarvelClient action brings happiness for your users

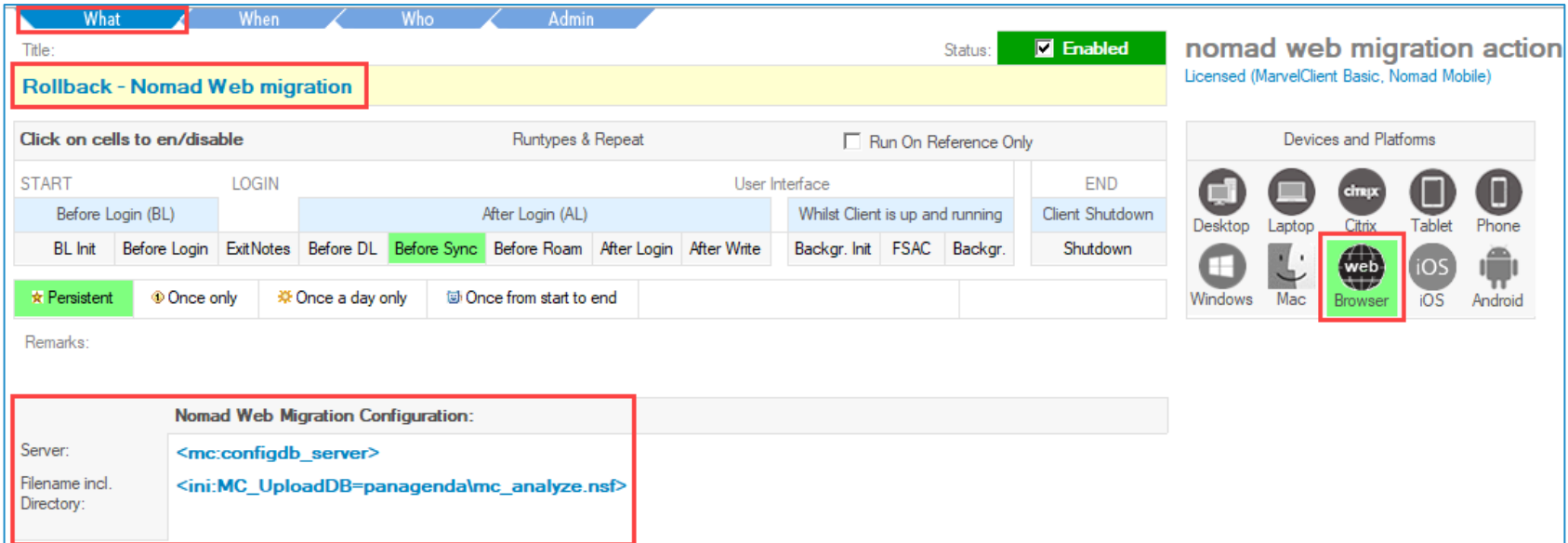


The screenshot displays the panagenda web interface. On the left, the 'MarvelClient' sidebar is expanded to show 'All Actions', which is highlighted with a red box. A red arrow points from this box to the 'Nomad' dropdown menu in the top navigation bar, which is also highlighted with a red box. The dropdown menu is open, showing several options, with 'N1.3. Nomad Web Migration' highlighted in blue and also enclosed in a red box. The main content area shows a table with columns for '#', 'Active', '0/1', and 'Priority'. The table contains several rows of data, including a summary row at the bottom with values 27 and 21. The interface also shows a 'Welcome!' message and a 'Rich Client Essentials' section.

#	Active	0/1	Priority
13	9		
13	9		
3	3		
3	3		
2	2		
1	1		
4	0		
5	4		
9	8		
27	21		

Nomad Web Migration – from Notes to Nomad (cont.)

- A single and simple MarvelClient action brings happiness for your users



The screenshot displays the configuration for a 'nomad web migration action'. The title is 'Rollback - Nomad Web migration', which is highlighted with a red box. The status is 'Enabled'. The interface includes a 'Click on cells to en/disable' section with a 'Run On Reference Only' checkbox. The configuration is divided into 'START', 'LOGIN', 'User Interface', and 'END' phases. The 'Before Sync' cell is highlighted in green. Below the phases, there are options for persistence: 'Persistent' (checked), 'Once only', 'Once a day only', and 'Once from start to end'. A 'Remarks' field is present. At the bottom, a 'Nomad Web Migration Configuration' section is highlighted with a red box, showing the following settings:

Server:	<mc:configdb_server>
Filename incl.	<ini:MC_UploadDB=panagenda\mc_analyze.nsf>
Directory:	

On the right side, there is a 'Devices and Platforms' section with icons for Desktop, Laptop, Citrix, Tablet, Phone, Windows, Mac, Browser (highlighted with a red box), iOS, and Android.

THANK YOU!



Your Feedback Matters to Us



SCAN ME



Series: Mastering HCL Notes and Domino in 2024

Easier, Faster, and More Powerful – Notes Document Properties Reimagined

May 14, 2024 | 10 am EDT | 4 pm CEST

Register Today >



Julian Robichaux

Development Team Lead
IBM Lifetime Champion & HCL Lifetime Ambassador
panagenda

